

# DIFFERENTIAL PRESSURE TRANSMITTERS - LOW RANGES

High Accuracy, Ranges Down to 0.1 in w.c. (25 Pa)

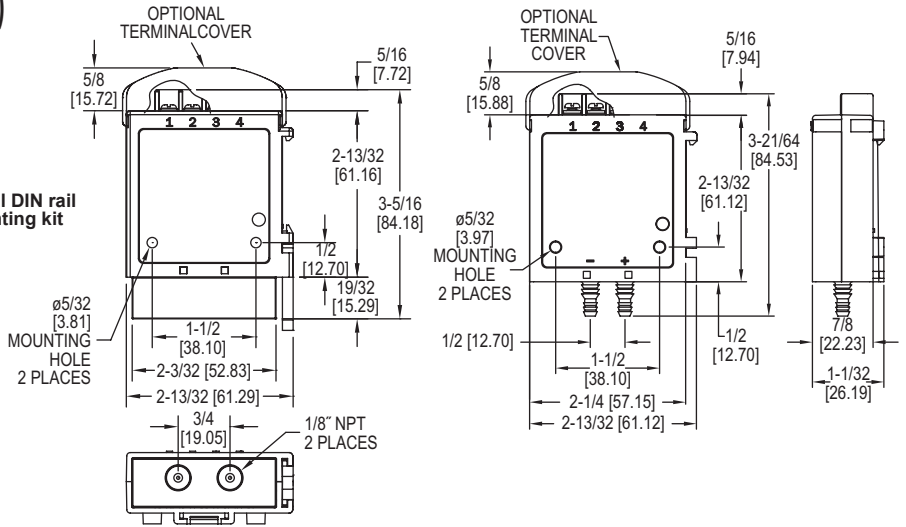


Optional NPT connection block



Digital push buttons set both zero and span

Integral DIN rail mounting kit



The Series 616KD-LR Differential Pressure Transmitters - Low Ranges are designed for simplicity, making it the ideal choice for installers and maintenance professionals. These low range instruments not only alleviate cumbersome turn pots typically found in most transmitters, but eliminate entirely the need to span the instruments during calibration. With single digital push-button, both ZERO AND SPAN are calibrated properly, nothing else is required. No additional reference pressure sources or separate calibration devices are necessary.

**FEATURES/BENEFITS**

- Wide selection of low ranges and accuracy cover numerous applications minimizing components and standardizing on design
- Simple calibration push-buttons to set zero and span, saving time installing and maintaining over the service life
- Cost effective and compact device suitable for OEM applications where space, simplicity, and value are key
- Simultaneous current and voltage outputs
- Optional 1/8" NPT process connection allows for use with metal barbed fittings or compression fittings for use with metal tubing
- Optional plenum rated units meeting UL Standard 2043 are available

**APPLICATIONS**

- Air handlers
- Duct pressure
- Variable air volume
- Filter monitoring

**SPECIFICATIONS**

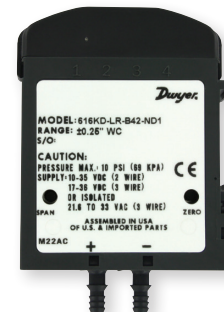
**Service:** Air and non-combustible, compatible gases.  
**Wetted Materials:** Consult factory.  
**Accuracy:**  $\pm 0.25\%$  FS for  $\pm 0.4"$  (100 Pa) and  $\pm 0.5"$  (125 Pa),  $\pm 0.5\%$  FS for  $\pm 0.25"$  (60 Pa), and  $\pm 1\%$  FS for  $\pm 0.1"$  (25 Pa).  
**Stability:**  $\pm 1\%$  / year FSO.  
**Temperature Limits:** 0 to 140°F (-17.8 to 60°C).  
**Pressure Limits:** 1 psi max., operation; 10 psi burst.  
**Power Requirements:** 10-35 VDC (2 wire), 17-36 VDC or isolated 21.6-33 VAC (3 wire).  
**Output Signal:** 4-20 mA (2-wire), 0-5 VDC, 0-10 VDC (3-wire).  
**Response Time:** 2.5 Hz sample rate.

**Zero and Span Adjustments:** Push buttons.  
**Loop Resistance:** Current Output: 0 to 1250Ω max; Voltage Output: Min. load resistance 1kΩ.  
**Current Consumption:** 40 mA max.  
**Electrical Connections:** Screw-type terminal block.  
**Process Connections:** Barbed, dual size to fit 1/8" & 3/16" (3 mm & 5 mm) ID rubber or vinyl tubing, or 1/8" NPT.  
**Enclosure Rating:** NEMA1 (IP20).  
**Mounting Orientation:** Vertical with pressure connections pointing down.  
**Weight:** 1.8 oz (51 g).  
**Agency Approvals:** CE, optional plenum rated units meet UL Standard 2043.

MODEL CHART							
Example	616KD-LR	-A	34	-B	D1	-FC	616KD-LR-A34-BD1-FC
Series	616KD-LR						Differential pressure transmitter
Accuracy		A B D					0.25% FS accuracy 1.0% FS accuracy 0.5% FS accuracy
Range			31 32 34 35 41 42 44 45 61 62 64 65 71 72 74 75				0 to 0.1 in w.c. ① 0 to 0.25 in w.c. ② 0 to 0.4 in w.c. 0 to 0.5 in w.c. 0 to $\pm 0.1$ in w.c. ① 0 to $\pm 0.25$ in w.c. ② 0 to $\pm 0.4$ in w.c. 0 to $\pm 0.5$ in w.c. 25 Pa ① 60 Pa ② 100 Pa 125 Pa 0 to $\pm 25$ Pa ① 0 to $\pm 60$ Pa ② 0 to $\pm 100$ Pa 0 to $\pm 125$ Pa
Process Connection				B N			Plastic barb 1/8" female NPT with front push-button
Output					D1 D2 D3 D4		4-20 mA and 0-10 V 4-20 mA and 0-5 V 4-20 mA and 2-10 V 4-20 mA and 1-5 V
Options						AT COC FC NIST TC PR	Aluminum tag Certificate of Conformance Factory calibration certificate NIST traceable calibration certificate Terminal cover Plenum rated

①B accuracy only. ②B and D accuracies only.

ACCESSORIES	
Model	Description
A-360	Aluminum DIN rail 1 m
A-618	Protective terminal cap



A-618 installed on unit